

Hyd. Hand Pump Fluid Removal Instructions

WARNING:

ALWAYS FOLLOW PROPER PPE & SAFETY PROCEDURES WHEN USING POWER EQUIPMENT

WARNING:

DO NOT FILL WITH CYLINDERS EXTENDED

Before Removing Existing Pump

Fig.1

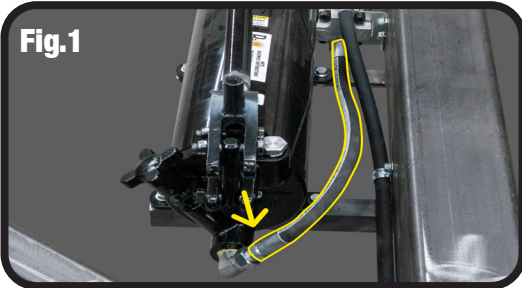


Fig.2



1. Release Pressure from Hydraulic System by turning the release valve counter-clockwise.
2. With slides lowered, disconnect the end of the hydraulic hose that is attached to the hand pump. Use caution when disconnecting hydraulic hose as fluid loss can occur. DO NOT remove the entire hose. (Figure 1)
3. With hose end disconnected, place a cap on end of hydraulic hose to prevent fluid loss and reduce the risk of air entering the hydraulic system (Figure 2)
4. Remove bolts that secure pump to the trailer

NOTICE

DO NOT ALLOW FLUID TO DRAIN FROM CYLINDERS

1 Removing Pump



Remove the bolts and nuts securing the pump to the trailer.

2 Remove Dip Stick & Vent Plug



Remove the vent plug with a 7/8" wrench.

Remove the dip stick with a 3/4" wrench.

3

Drain Fluid



Tilt pump until fluid starts to drain from the vent plug hole. Continue to drain until the pump is completely empty.

Reinstall pump to trailer with nuts and bolts.

4

Remove Piston Rod



With yoke attached, pull piston assembly out of the piston cavity. Set it aside on a clean surface.

⚠ NOTICE ⚠

**DO NOT
SCRATCH /
DAMAGE
PISTON**

5

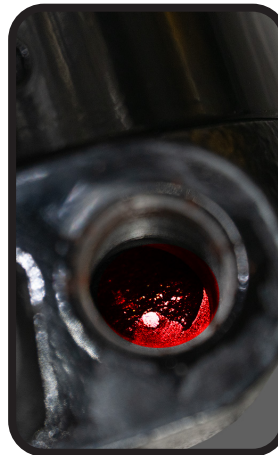
Priming The Pump



With the piston assembly removed, fill the piston cavity with **automatic transmission fluid** as outlined in the service manual. Fill fluid to 1" from top. Reinstall piston & yoke. Reattach linkage pin to yoke with nut & bolt.

6

Filling Pump Reservoir



Remove the vent plug. Fill the reservoir with fluid using the filler port. Once fluid is seen entering the vent cavity, pump is full.

7

Reinstall & Tighten the Dip Stick & Vent Plug



⚠ NOTICE ⚠

If fluid shoots out the breather/vent plug, the pump is overfilled. After several uses this goes away.